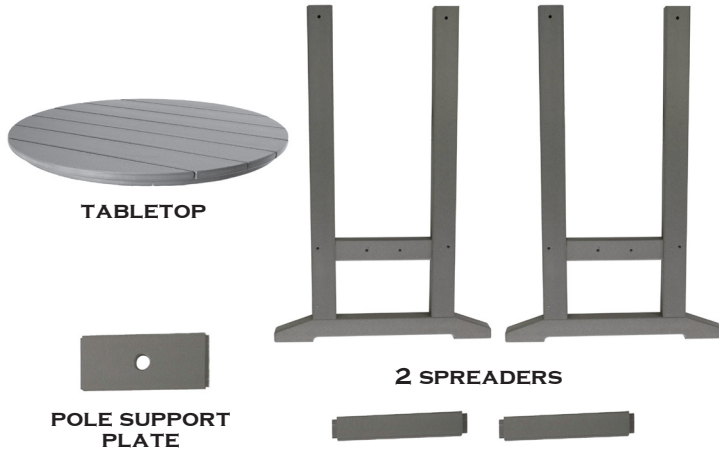




Durawood Sunrise High Dining Table

TABLE PARTS



HARDWARE PACK

- 4 - 3" Bolts
- 8 - 2" Flathead Screws
- 4 - Washers
- 4 - Lock Washers
- 4 - Nuts
- 1 - Allen Wrench
- 1 - Square Head Drill Bit

Hardware pack weight: 5.14 oz

Before beginning assembly, make sure you have all parts. Note that not all parts pictured are to scale.



SUGGESTED TOOLS (NOT PROVIDED)



- Standard Phillips Head Screwdriver
- Adjustable Wrench
- Drill

Congratulations on purchasing this Durawood Sunrise Counter Height Table! You're going to love the quality, durability and simple assembly — plus the full Residential Lifetime Warranty. **QUESTIONS ABOUT THIS PRODUCT?** Call our customer service team, (800) 643-3522.

ASSEMBLY INSTRUCTIONS

STEP 1. Place Tabletop on flat surface as shown.

STEP 2. Align holes in one Table Leg with holes in Table Top. (FIGURE 2) and insert Bolts. Secure bolt by placing one washer, one lock washer and one nut - in that order. (FIGURE 3). Repeat for second Table Leg.

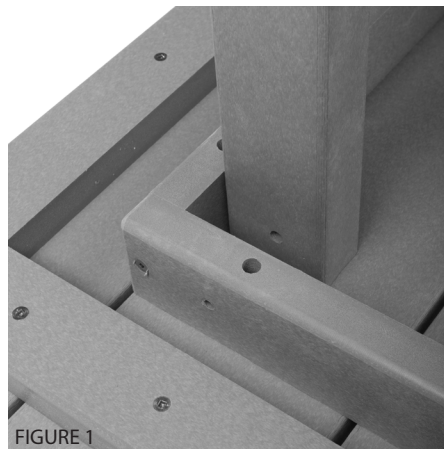


FIGURE 1



FIGURE 2

STEP 3. Insert Spreader Bars. (FIGURE 3) Secure using Screws (FIGURE 4).

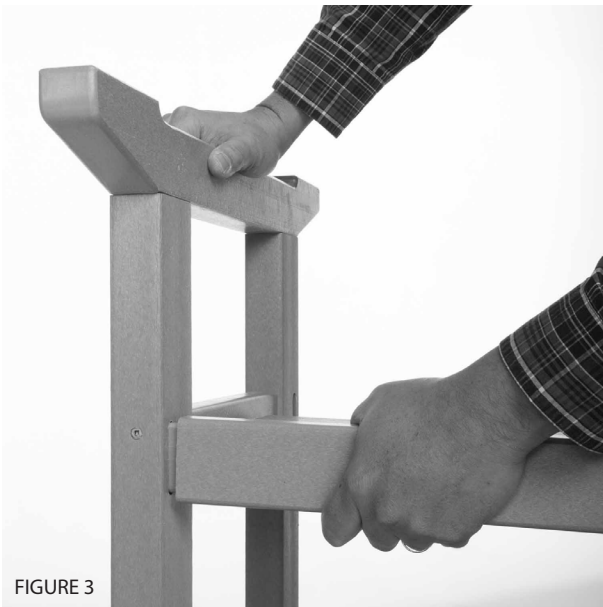


FIGURE 3

STEP 3. Seed Pole Support Plate into place as shown (FIGURE 5). Secure using Screws (FIGURE 6).

STEP 4. Tighten all Screws and Bolts securely.

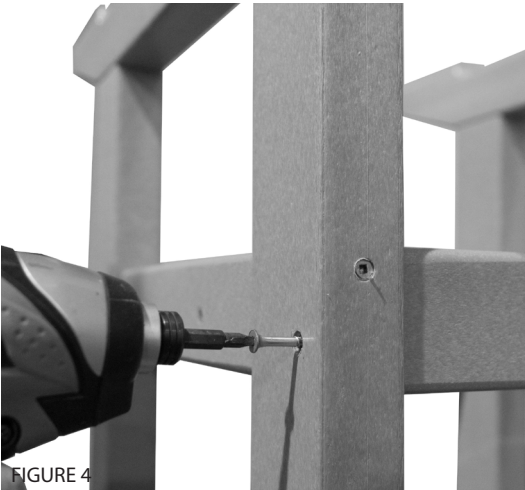


FIGURE 4

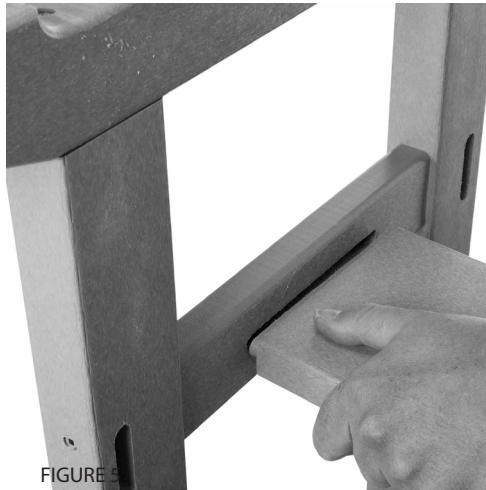


FIGURE 5



FIGURE 6

RESIDENTIAL WARRANTY | This quality product includes a **FULL LIFETIME WARRANTY** for **RESIDENTIAL CUSTOMERS**. In the unlikely event any splintering, rotting, cracking, peeling, chipping, insect infestation or other damage should ever occur, The Hammock Source will replace this furniture, at no charge to you. Note that an original sales receipt must accompany any returned product, along with a Return Authorization Number from Hammock Source customer service; call toll-free at (800) 643-3522.

CONTRACTOR WARRANTY | **CONTRACTORS** receive a **FULL 7-YEAR WARRANTY**. Follow the same steps outlined above.