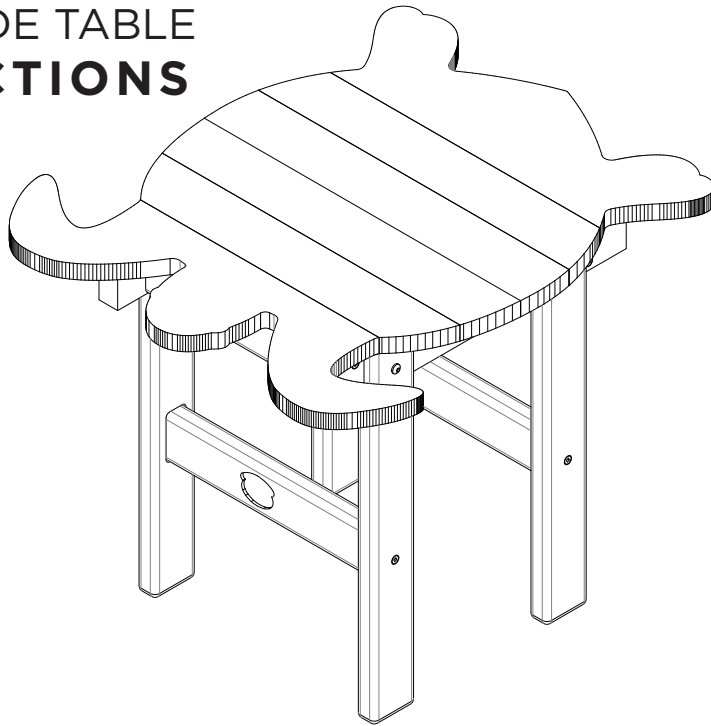
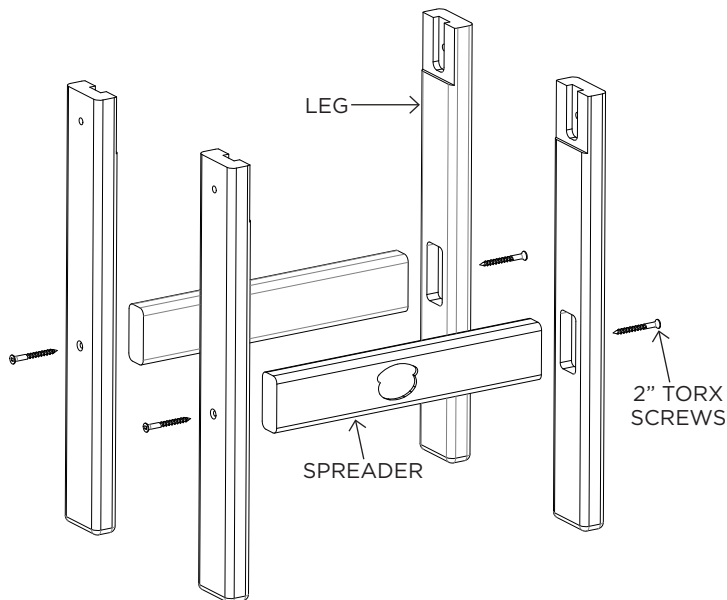


TURTLE SIDE TABLE INSTRUCTIONS



ASSEMBLY

STEP 1. Use (4) 2" torx screws to attach legs to spreaders.
Make sure logo is upright before screwing in.



HARDWARE PACK

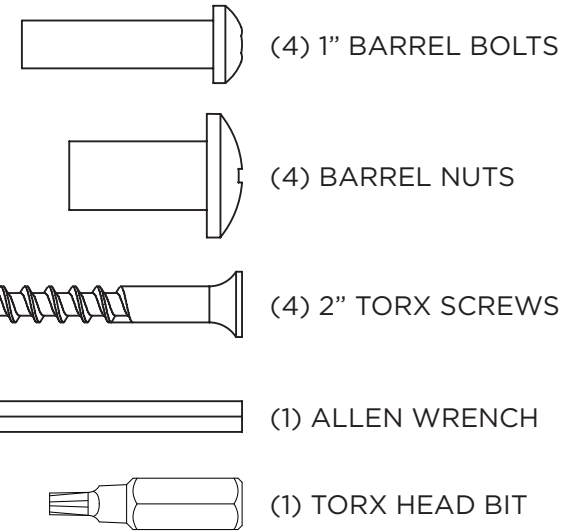


TABLE PARTS

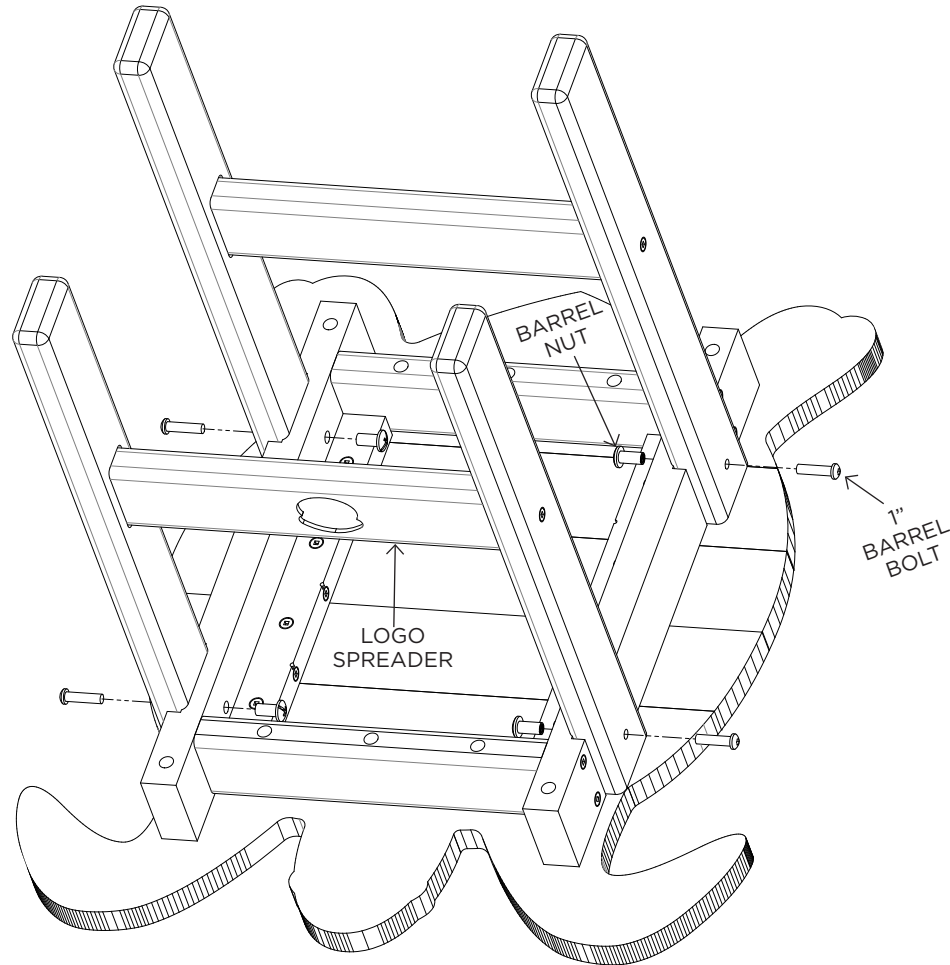
- TABLE TOP
- (4) LEGS
- (2) SPREADERS

SUGGESTED TOOLS

- RUBBER Mallet
- PHILLIPS HEAD SCREWDRIVER
- DRILL

Tip: When using a barrel bolt with a barrel nut, place the bolt into the barrel nut and gently turn it counter clockwise until you feel a slight click. Then proceed to turn the bolt clockwise to tighten the barrel nut onto the barrel bolt.

STEP 2. Use (4) 1" barrel bolts and (4) barrel nuts to attach to table top to legs. Tighten all bolts.
Keep logo spreader facing outwards.



Congratulations on purchasing this Durawood Turtle Side Table. QUESTIONS REGARDING THIS PRODUCT? Call our customer service team, 252-758-0641.

RESIDENTIAL WARRANTY - This quality product includes a LIMITED LIFETIME WARRANTY for RESIDENTIAL CUSTOMERS. In the unlikely event any splintering, rotting, cracking, peeling, or chipping should ever occur, The Hammock Source will supply replacement parts or replace the furniture, at no charge to you. This does not include negligence, improper use, animal damage or damage caused by natural disasters. When using around fire, keep furniture at a minimum distance of 30 inches from the heat source. Prevent prolonged exposure to chlorinated water. Note that an original sales receipt must accompany any returned product, along with a Return Authorization Number from Hammock Source customer service; call at 252-758-0641.

CONTRACTOR WARRANTY - CONTRACTORS receive a LIMITED 7-YEAR WARRANTY. Follow the same steps outlined above.

MAINTENANCE - Thoroughly inspect product before each use. Periodically check bolts after assembly and re-tighten when necessary.

